

Item	Description	HP Part No.
1	Machine Screw	0515-0910
2	Top Cover	19243-00085
3	Insulation	19243-00100
4	Insulation	19243-00155
5	PPIP Assembly	19243-60535
6	· Heater Sensor	05890-61540
	Flex Cover	0890-0737
	PRT Assembly	19231-60660
	70W Heater	19243-60640
7	· Machine Screw	0515-0964
8	· Septum Nut Assembly	18740-60835
	Headspace Septum Nut	18740-60830
9	· Top Insert Assembly	19243-80570
10	· O-ring (Package of 12)	5080-8898
11	· PPIP Brazement	19243-80580 NEW P/N
12	· Lock Plate	19243-00135
13	· Heated Block	19243-20765
14	· Thermal Strap	19243-00145
15	Ferrules (Package of 10)	
	· Vespel 2% Graphite for 530 m col	5062-3511
	· Vespel 2% Graphite for 320 m col	5062-3513
	· Vespel 2% Graphite for 200 m col	5062-3515
	· Vespel 10% Graphite for 530 m col	5062-3512
	· Vespel 10% Graphite for 320 m col	5062-3514
	· Vespel 10% Graphite for 200 m col	5062-3516
16	Column Nut	18740-20870
17	Nutwarmer Insulation	19234-60710
18	Nutwarmer Cup Assembly	19234-60700
NOT SHOWN		
	Inlet Liners	
	1/4" Column with Glass Inserts	19243-80540
	1/4" Column without Glass Inserts	19243-80520
	1/8" Column with Glass Inserts	19243-80530
	1/8" Column without Glass Inserts	19243-80510
	Capillary Column	19244-80540
	Glass Inserts	
	Deactivated	5181-3382
	Nondeactivated	5080-8732

Figure 7. EPC Purged Packed Inlet (Sheet 1 of 2).

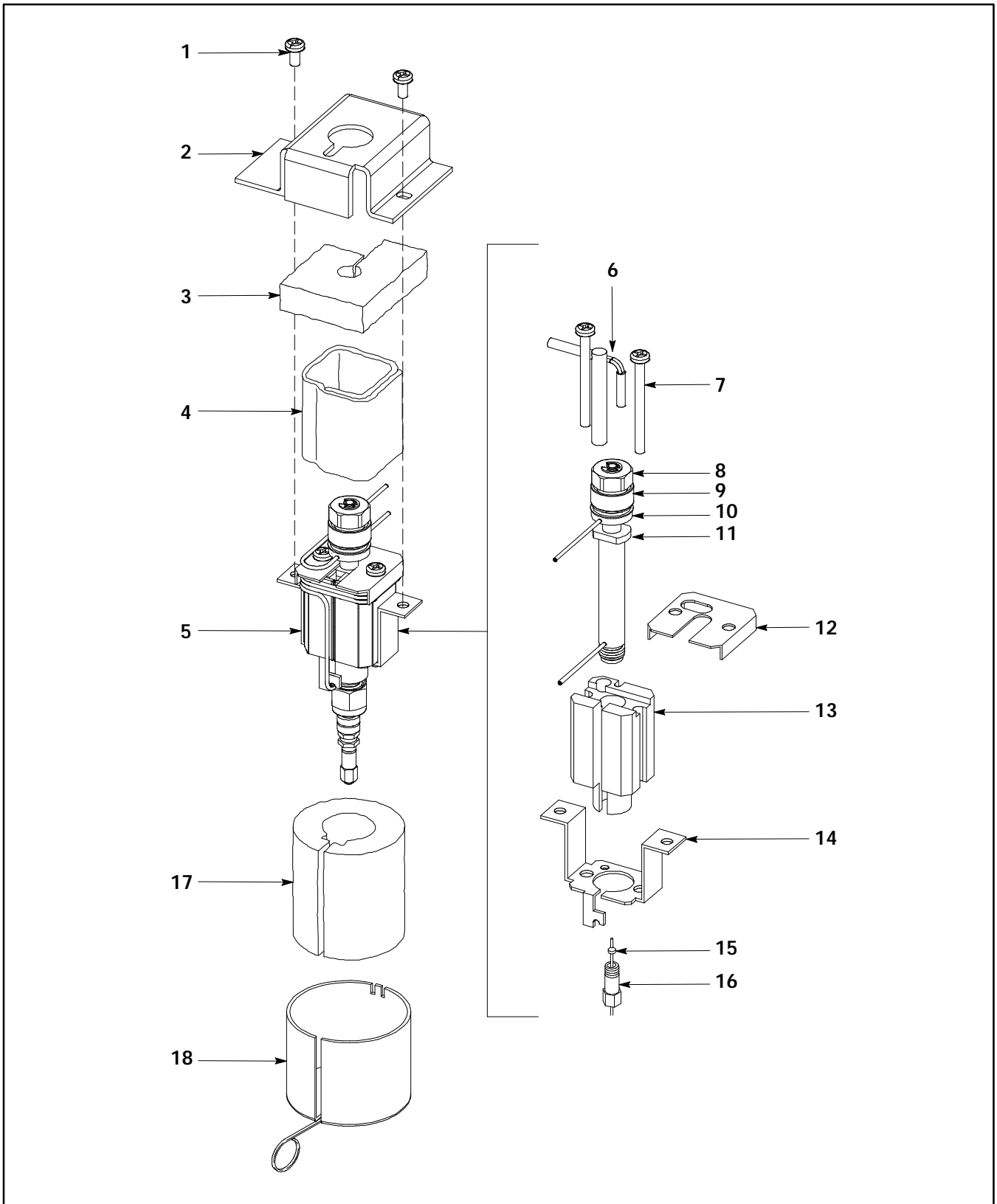


Figure 7. EPC Purged Packed Inlet (Sheet 2 of 2).